

Severe Cerebral Small Vessel Disease Caused by the Uniallelic p.A252T Variant of *HTRA1*

Yasufumi Kondo, MD, PhD,* Tsuneaki Yoshinaga, MD, PhD,* Katsuya Nakamura, MD, PhD,
Tomomi Yamaguchi, Msc, Masumi Ishikawa, Msc, Tomoki Kosho, MD, PhD, and Yoshiki Sekijima, MD, PhD

Correspondence
Dr. Nakamura
katsuya@shinshu-u.ac.jp

Neurol Genet 2023;9:e200047. doi:10.1212/NXG.000000000200047

Abstract

Objective

To investigate the clinical effect of a heterozygous missense variant of *HTRA1* on cerebral small vessel disease (CSVD) in a large Japanese family with a p.A252T variant.

Methods

We performed clinical, laboratory, radiologic, and genetic evaluations of members of a previously reported family with cerebral autosomal recessive arteriopathy with subcortical infarcts and leukoencephalopathy (CARASIL).

Results

Two family members were previously reported patients with CARASIL. Among 6 uniallelic p.A252T carriers, 2 had neurologic symptoms with brain MRI abnormalities, 2 showed CSVD on the MRI only, and the other 2 were unaffected. Clinical phenotypes of 2 heterozygous patients were comparable with those of patients with CARASIL, whereas the other 3 heterozygous patients had developed milder and later-onset CSVD. One heterozygous carrier was asymptomatic.

Discussion

Previous studies have suggested that uniallelic p.A252T causes disease. However, our study revealed that patients with uniallelic p.A252T can have severe and young-onset CSVD. The clinical manifestations of uniallelic variant carriers were highly variable, even within the same family. Male and atherosclerotic risk factors were considered to be additional factors in the severity of neurologic symptoms in uniallelic p.A252T carriers, suggesting that strict control of vascular risk factors can prevent vascular events in uniallelic *HTRA1* carriers.

*These authors contributed equally to this work.

From the Department of Medicine (Neurology & Rheumatology) (Y.K., Tsuneaki Yoshinaga, K.N., Y.S.), Shinshu University School of Medicine; Center for Medical Genetics (K.N., Tomomi Yamaguchi, M.I., T.K.), Shinshu University Hospital; Department of Medical Genetics (Tomomi Yamaguchi, T.K.), Shinshu University School of Medicine; and Division of Clinical Sequencing (Tomomi Yamaguchi, T.K.), Shinshu University School of Medicine.

Funding information and disclosures are provided at the end of the article. Full disclosure form information provided by the authors is available with the full text of this article at [Neurology.org/NG](https://www.neurology.org/NG).

The Article Processing Charge was funded by the authors.

This is an open access article distributed under the terms of the Creative Commons Attribution-NonCommercial-NoDerivatives License 4.0 (CC BY-NC-ND), which permits downloading and sharing the work provided it is properly cited. The work cannot be changed in any way or used commercially without permission from the journal.

Table Clinical and Neuroimaging Features of the *HTRA1* Variant Carriers

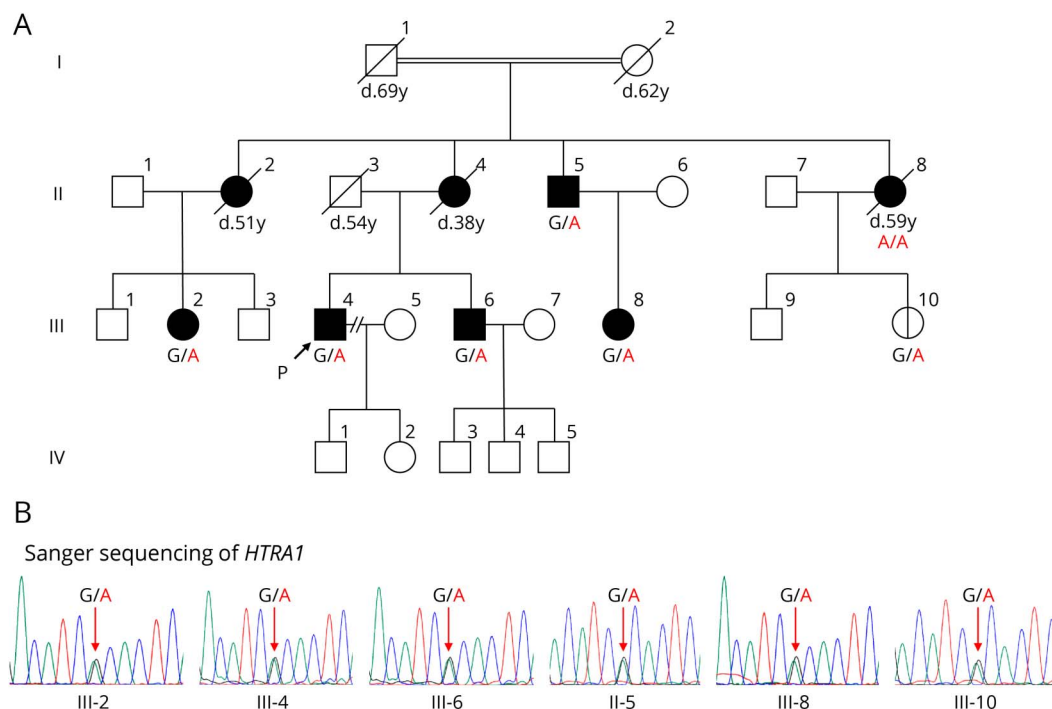
Patient (pedigree number)	Pt. 1 (II-2) ^a	Pt. 2 (II-4)	Pt. 3 (II-8) ^a	Pt. 4 (II-5)	Pt.5 (III-4)	Pt. 6 (III-6)	Pt. 7 (III-2)	Pt. 8 (III-8)	Pt. 9(III-10)
Sex	Female	Female	Female	Male	Male	Male	Female	Female	Female
Age at examination (y)	51	38	48	70	49	47	52	39	39
Age at onset (y)	34	28	38	62	37	38	50	— ^b	— ^b
Disease duration (y)	17	10	10	8	12	9	2	— ^b	— ^b
Hypertension	(-)	(-)	(-)	(+)	(-)	(+)	(+)	(-)	(-)
Diabetes	NA	(-)	(-)	(+)	(-)	(-)	(-)	(-)	(-)
Dyslipidemia	NA	(-)	(-)	(+)	(+)	(+)	(+)	(-)	(-)
Smoke	NA	NA	NA	(+)	(+)	(-)	(-)	(-)	(-)
Initial symptom	Gait disturbance	Dysarthria	Diplopia	Dysarthria	Gait disturbance	Headache	(-)	— ^b	— ^b
Alopecia of younger onset	(-)	(-)	(-)	(-)	(-)	(-)	(-)	(-)	(-)
Lumbago/spondylosis	NA	NA	(+)	(+)	(+)	(+)	(+)	(+)	(-)
Walking ability	Bedridden	Bedridden	Wheelchair	Unaided	Wheelchair	Unaided	Unaided	Unaided	Unaided
Pyramidal sign	(+)	(+)	(+)	(-)	(+)	(+)	(-)	(-)	(-)
Dementia	(+)	(+)	(-)	(-)	(+)	(+)	(-)	(-)	(-)
Acute stroke	(+)	(+)	(+)	(+)	(+)	(+)	(-)	(-)	(-)
Brain MRI findings									
Periventricular WMHs	NA	NA	(+)	(+)	(+)	(+)	(+)	(-)	(-)
External Capsule	NA	NA	(+)	(+)	(-)	(+)	(+)	(-)	(-)
Temporal Pole	NA	NA	(+)	(-)	(-)	(-)	(-)	(-)	(-)
Abnormal signals of the brainstem	NA	NA	(+)	(+)	(+)	(+)	(+)	(-)	(-)
Lacunar infarctions	NA	NA	NA	(+)	(+)	(+)	(-)	(-)	(-)
Microbleeds	NA	NA	NA	(+)	(+)	(+)	(-)	(-)	(-)
Atrophy of the cerebrum	NA	NA	(-)	(+)	(+)	(+)	(-)	(-)	(-)
brainstem	NA	NA	(-)	(-)	(+)	(-)	(-)	(-)	(-)
<i>HTRA1</i> (c.754G>A) genotype	Unexamined	Unexamined	Homozygote	Heterozygote	Heterozygote	Heterozygote	Heterozygote	Heterozygote	Heterozygote

Abbreviations: NA = information not available; Pt = patient; WMHs = white matter hyperintensities.

^a Described based on data from the literature.

^b These patients had no neurologic symptoms or brain imaging abnormalities and had never visited a neurology clinic before we performed a medical survey on the family members of the siblings (V-4 and V-6).

Figure 1 Pedigree and Sanger Sequencing of *HTRA1*



(A) The numbers below the symbols indicate the age in years (y) at death (d) of deceased individuals indicated by a strikethrough. The proband and the younger brother are indicated by arrows. II-8 had been genetically tested and confirmed to have an *HTRA1* homozygous variant in a previous report.¹ Filled symbols indicate that the patient had leukoencephalopathy, lumbago, or spondylosis. A symbol with a secant line indicates an asymptomatic patient. (B) Sanger sequencing of *HTRA1*.

Cerebral autosomal recessive arteriopathy with subcortical infarcts and leukoencephalopathy (CARASIL) is an autosomal recessive cerebral small vessel disease (CSVD) caused by biallelic variants in *HTRA1*,¹ whereas *HTRA1* uniallelic variants cause hereditary CSVD with a milder form and later-onset, *HTRA1*-linked autosomal dominant CSVD (AD-CSVD).² Here, we report a Japanese family with the *HTRA1* p.A252T variant (NM_002775.5:c.754G>A), which showed marked intrafamilial phenotypic variation.

Case Presentation

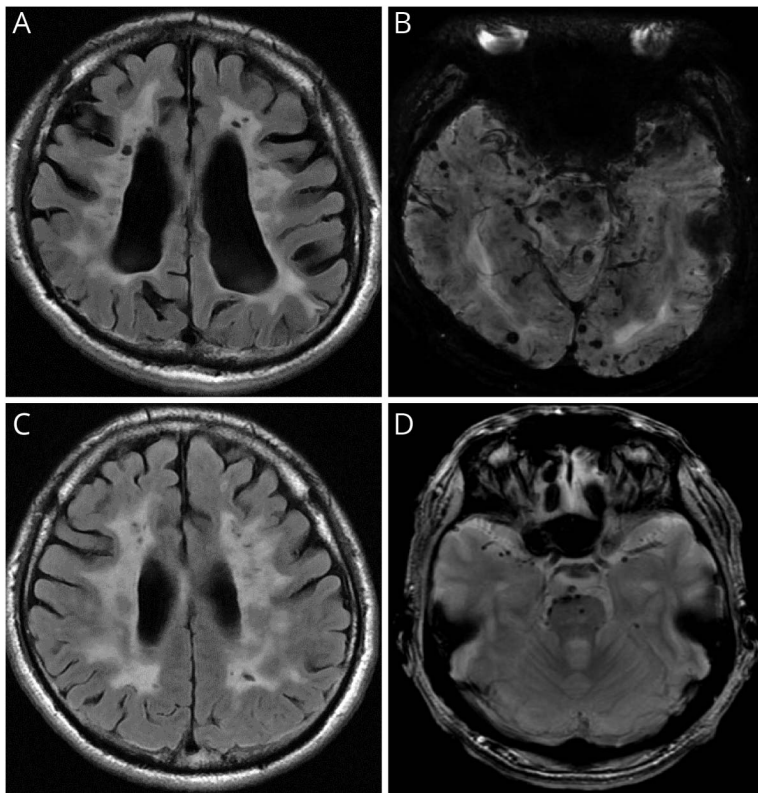
Patient 1 (II-2, Figure 1A, Table) developed knee pain at 34 years and had a stroke episode at 37 years. Neurologic examination at 40 years showed cognitive decline, emotional instability, pseudobulbar palsy, urinary incontinence, and bilateral pyramidal signs. She became bedridden and died at 51 years. Based on both clinical and postmortem pathologic findings, we diagnosed patient 1 as likely CARASIL.^{1,3}

Patient 2 (II-4) first noticed dysarthria, followed by recurrent episodes of transient hemiparesis at 28 years. Neurologic examination at 29 years revealed cognitive decline, rigidity, bradykinesia, and pyramidal tract signs. At 30 years, she developed emotional instability and pseudobulbar palsy. She died at 38 years.

Patient 3 (II-8) had genetically confirmed CARASIL and carried homozygous *HTRA1* p.A252T.^{1,3} She developed lumbago and knee pain as a teenager. At 38 years, she had recurrent episodes of stroke and showed dysarthria, hemiparesis, and gait disturbance. She became a wheelchair user because of spastic paresis and cerebellar ataxia at 48 years.

Patient 4 (II-5) was a 70-year-old man who carried heterozygous p.A252T with multiple atherosclerotic risks (Figure 1B). He developed lacunar infarction at 62 years. He was diagnosed with hypertension and diabetes mellitus and treated with cilostazol, pitavastatin, amlodipine, and sitagliptin. At 70 years, he showed neither cognitive dysfunction nor gait disturbance, although MRI showed cerebral atrophy, white matter hyperintensities (WMHs), and microbleeds (eFigure A–D, links.lww.com/NXG/A568).

Patient 5 (III-4) was a 49-year-old man with heterozygous p.A252T. At 37 years, he developed gait disturbance, and MRI showed acute lacunar infarction in the left radiate crown with multiple previous infarctions. He was a smoker but had no other atherosclerosis risks. He repeatedly developed cerebrovascular events, and his gait and cognitive functions deteriorated progressively, despite dual antiplatelet therapy. At 43 years, he was diagnosed with hyperlipidemia and started statin therapy that reduced the frequency of stroke attacks. In serial MRI analyses, WMHs had expanded from the center of



(A and B) Patient 5 (III-4) at 49 years of age. (C and D) Patient 6 (III-6) at 47 years of age. Fluid-attenuated inversion recovery images (A and C) showed periventricular to subcortical white matter hyperintensities, lacunar infarctions, and cerebral atrophy. Susceptibility-weighted imaging (B) and T2*(D) showed microbleeds in both the cerebral cortex and the brainstem surface.

the semicircle to the periventricular area of lateral ventricles, and progressive diffuse brain atrophy and microbleeds were evident (Figure 2, A and B; eFigure E, F, links.lww.com/NXG/A568). Intensive screening tests showed no typical causes or risk factors known to be associated with ischemic stroke in young adults, such as vasculitis, antiphospholipid antibody syndrome, protein C/S deficiency, and Fabry disease.

Patient 6 (III-6) was a 47-year-old man with heterozygous p.A252T. He developed lumbago in his twenties. At 39 years, he developed headaches, and MRI showed multiple cerebral infarctions. Neurologic findings were normal. He had no risk of atherosclerosis. He was treated with antiplatelet therapy but had repeated cerebrovascular events. At 43 years, he was diagnosed with hyperlipidemia and hypertension and treated with pitavastatin and amlodipine. At 48 years, he developed cognitive decline and parkinsonism. On the basis of the Wechsler Adult Intelligence Scale 4th edition, he had a full-scale IQ of 78, verbal comprehension index of 96, perceptual reasoning index of 76, working memory index of 91, and processing speed index of 66. Serial MRI analyses showed WMHs around the lateral ventricles that gradually fused and extended subcortically (Figure 2C). Abnormal intensity was also observed in the external capsule and brainstem (eFigure G, H, links.lww.com/NXG/A568). Microbleeds were prominent on the brainstem surface and increased over time (Figure 2D).

We also ruled out disease-causative variants of *NOTCH3*, *CTSA*, *GLA*, *COL4A1*, and *TREX1*.

Patient 7 (III-2) was a 52-year-old woman with heterozygous p.A252T. She developed lumbago at 38 years. She had no medical history of stroke but had hypertension and hyperlipidemia. MRI showed asymptomatic WMHs.

Patient 8 (III-8) was a 39-year-old woman with heterozygous p.A252T. She developed lumbago in her twenties but had no other clinical symptoms or brain imaging abnormalities.

Patient 9 (III-10) was a 39-year-old unaffected woman with heterozygous p.A252T.

Discussion

Among previously reported CARASIL cases, family members who carried heterozygous variants were reported to be asymptomatic.¹ Recently, patients with isolated and hereditary CSVD who carried uniallelic *HTRA1* variants have been reported worldwide. Missense variants of *HTRA1*-linked AD-CSVD are frequently located in the linker region or L3/LD domain, both of which are critical sites for *HTRA1* activation. Moreover, patients with symptomatic CSVD with uniallelic null variants have been reported. Thus, residual protease activity of *HTRA1* is

considered to be a risk factor associated with the clinical phenotype of HTRA1-linked CSVD.^{4,5} Uniallelic p.A252T has not been considered to cause disease because p.A252T is distant from the L3/LD domain and has relatively preserved residual protease activity with no dominant-negative effect.⁶ However, our study revealed that patients with uniallelic p.A252T can have severe and young-onset CSVD.

The most important finding of this study is the large heterogeneity of clinical manifestations within a single family. Similar intrafamilial variations in HTRA1-linked AD-CSVD have been reported,^{7,8} and sex (male) and atherosclerosis risk factors, including hypertension and hyperlipidemia, are considered to be related to CSVD development.⁴ These findings suggest that strict control of vascular risk factors can prevent vascular events in uniallelic *HTRA1* carriers. Among uniallelic p.A252T carriers, the clinical phenotypes of patients 4 and 5 were comparable with those of a family member with the biallelic variant, whereas those of other heterozygous members were milder or asymptomatic. The current study suggests that heterozygous status of p.A252T and other variants with relatively preserved residual protease activity can be at risk, and other variables including vascular risk factors have a much stronger effect than currently believed.

Acknowledgment

The authors thank Ms. T. Fujikawa, Ms. Y. Takiguchi, Ms. E. Nomura, and Ms. S. Nagasaki for technical support.

Study Funding

This study was supported in part by a Grant-in-Aid from the Ministry of Education, Culture, Sports, Science, and Technology (Problem-Solving Oriented Training Program for Advanced Medical Personnel: NGSD Project), the Program for an Integrated Database of Clinical and Genomic Information, Japan Agency for Medical Research and Development (AMED) under Grant Number JP18kk0205012h0003.

Disclosure

The authors report no relevant disclosures. Full disclosure form information provided by the authors is available with the full text of this article at [Neurology.org/NG](https://www.neurology.org/NG).

Publication History

Received by *Neurology: Genetics* June 27, 2022. Accepted in final form October 14, 2022. Submitted and externally peer reviewed. The handling editor was Raymond P. Roos, MD, FAAN.

Appendix Authors

Name	Location	Contribution
Yasufumi Kondo, MD, PhD	Department of Medicine (Neurology & Rheumatology), Shinshu University School of Medicine	Drafting/revision of the manuscript for content, including medical writing for content; major role in the acquisition of data; study concept or design; and analysis or interpretation of data

Appendix (continued)

Name	Location	Contribution
Tsuneaki Yoshinaga, MD, PhD	Department of Medicine (Neurology & Rheumatology), Shinshu University School of Medicine	Drafting/revision of the manuscript for content, including medical writing for content; major role in the acquisition of data; study concept or design; and analysis or interpretation of data
Katsuya Nakamura, MD, PhD	Department of Medicine (Neurology & Rheumatology), Shinshu University School of Medicine Center for Medical Genetics, Shinshu University Hospital	Drafting/revision of the manuscript for content, including medical writing for content; study concept or design; and analysis or interpretation of data
Tomomi Yamaguchi, Msc	Center for Medical Genetics, Shinshu University Hospital Department of Medical Genetics, Shinshu University School of Medicine Division of Clinical Sequencing, Shinshu University School of Medicine	Drafting/revision of the manuscript for content, including medical writing for content, and analysis or interpretation of data
Masumi Ishikawa, Msc	Center for Medical Genetics, Shinshu University Hospital	Drafting/revision of the manuscript for content, including medical writing for content, and analysis or interpretation of data
Tomoki Koshi, MD, PhD	Center for Medical Genetics, Shinshu University Hospital Department of Medical Genetics, Shinshu University School of Medicine Division of Clinical Sequencing, Shinshu University School of Medicine	Drafting/revision of the manuscript for content, including medical writing for content, and analysis or interpretation of data
Yoshiki Sekijima, MD, PhD	Department of Medicine (Neurology & Rheumatology), Shinshu University School of Medicine	Drafting/revision of the manuscript for content, including medical writing for content; study concept or design; and analysis or interpretation of data

References

- Hara K, Shiga A, Fukutake T, et al. Association of HTRA1 mutations and familial ischemic cerebral small-vessel disease. *New Engl J Med*. 2009;360(17):1729-1739.
- Verdura E, Hervé D, Scharrer E, et al. Heterozygous HTRA1 mutations are associated with autosomal dominant cerebral small vessel disease. *Brain*. 2015;138(8):2347-2358.
- Yanagawa S, Ito N, Arima K, Ikeda Si. Cerebral autosomal recessive arteriopathy with subcortical infarcts and leukoencephalopathy. *Neurology*. 2002;58(5):817-820.
- Uemura M, Nozaki H, Kato T, et al. HTRA1-related cerebral small vessel disease: a review of the literature. *Front Neurol*. 2020;11:545.
- Coste T, Herve D, Neau JP, et al. Heterozygous HTRA1 nonsense or frameshift mutations are pathogenic. *Brain*. 2021;144(9):2616-2624.
- Nozaki H, Kato T, Nihonmatsu M, et al. Distinct molecular mechanisms of HTRA1 mutants in manifesting heterozygotes with CARASIL. *Neurology*. 2016;86(21):1964-1974.
- Favaretto S, Margoni M, Salviati L, Pianese L, Manara R, Baracchini C. A new Italian family with HTRA1 mutation associated with autosomal-dominant variant of CARASIL: are we pointing towards a disease spectrum? *J Neurol Sci*. 2019;396:108-111.
- Zhang H, Qin X, Shi Y, et al. Genotype-phenotype correlations of heterozygous HTRA1-related cerebral small vessel disease: case report and systematic review. *Neurogenetics*. 2021;22(3):187-194.

Neurology® Genetics

**Severe Cerebral Small Vessel Disease Caused by the Uniallelic p.A252T Variant of
*HTRA1***

Yasufumi Kondo, Tsuneaki Yoshinaga, Katsuya Nakamura, et al.

Neurol Genet 2023;9;

DOI 10.1212/NXG.0000000000200047

This information is current as of December 15, 2022

Neurol Genet is an official journal of the American Academy of Neurology. Published since April 2015, it is an open-access, online-only, continuous publication journal. Copyright © 2022 The Author(s). Published by Wolters Kluwer Health, Inc. on behalf of the American Academy of Neurology. All rights reserved. Online ISSN: 2376-7839.



Updated Information & Services	including high resolution figures, can be found at: http://ng.neurology.org/content/9/1/e200047.full.html
References	This article cites 8 articles, 0 of which you can access for free at: http://ng.neurology.org/content/9/1/e200047.full.html##ref-list-1
Subspecialty Collections	This article, along with others on similar topics, appears in the following collection(s): All Genetics http://ng.neurology.org/cgi/collection/all_genetics CADASIL http://ng.neurology.org/cgi/collection/cadasil MRI http://ng.neurology.org/cgi/collection/mri Other cerebrovascular disease/ Stroke http://ng.neurology.org/cgi/collection/other_cerebrovascular_disease_stroke Stroke in young adults http://ng.neurology.org/cgi/collection/stroke_in_young_adults
Permissions & Licensing	Information about reproducing this article in parts (figures, tables) or in its entirety can be found online at: http://ng.neurology.org/misc/about.xhtml#permissions
Reprints	Information about ordering reprints can be found online: http://ng.neurology.org/misc/addir.xhtml#reprintsus

Neurol Genet is an official journal of the American Academy of Neurology. Published since April 2015, it is an open-access, online-only, continuous publication journal. Copyright © 2022 The Author(s). Published by Wolters Kluwer Health, Inc. on behalf of the American Academy of Neurology. All rights reserved. Online ISSN: 2376-7839.

