

Plasticity-related gene 3 (*LPPR1*) and age at diagnosis of Parkinson disease

Zachary D. Wallen, MS, Honglei Chen, PhD, Erin M. Hill-Burns, PhD, Stewart A. Factor, DO, Cyrus P. Zabetian, MD, MS, and Haydeh Payami, PhD

Correspondence

Dr. Payami
haydehpayami@uabmc.edu

Neurol Genet 2018;4:e271. doi:10.1212/NXG.0000000000000271

Abstract

Objective

To identify modifiers of age at diagnosis of Parkinson disease (PD).

Methods

Genome-wide association study (GWAS) included 1,950 individuals with PD from the NeuroGenetics Research Consortium (NGRC) study. Replication was conducted in the Parkinson's, Genes and Environment study, including 209 prevalent (PAGE_p) and 517 incident (PAGE_i) PD cases. Cox regression was used to test association with age at diagnosis. Individuals without neurologic disease were used to rule out confounding. Gene-level analysis and functional annotation were conducted using Functional Mapping and Annotation of GWAS platform (FUMA).

Results

The GWAS revealed 2 linked but seemingly independent association signals that mapped to *LPPR1* on chromosome 9. *LPPR1* was significant in gene-based analysis ($p = 1E-8$). The top signal (rs17763929, hazard ratio [HR] = 1.88, $p = 5E-8$) replicated in PAGE_p (HR = 1.87, $p = 0.01$) but not in PAGE_i. The second signal (rs73656147) was robust with no evidence of heterogeneity (HR = 1.95, $p = 3E-6$ in NGRC; HR = 2.14, $p = 1E-3$ in PAGE_p + PAGE_i, and HR = 2.00, $p = 9E-9$ in meta-analysis of NGRC + PAGE_p + PAGE_i). The associations were with age at diagnosis, not confounded by age in patients or in the general population. The PD-associated regions included variants with Combined Annotation Dependent Depletion (CADD) scores = 10–19 (top 1%–10% most deleterious mutations in the genome), a missense with predicted destabilizing effect on *LPPR1*, an expression quantitative trait locus (eQTL) for *GRIN3A* (false discovery rate [FDR] = 4E-4), and variants that overlap with enhancers in *LPPR1* and interact with promoters of *LPPR1* and 9 other brain-expressed genes (Hi-C FDR < 1E-6).

Conclusions

Through association with age at diagnosis, we uncovered *LPPR1* as a modifier gene for PD. *LPPR1* expression promotes neuronal regeneration after injury in animal models. Present data provide a strong foundation for mechanistic studies to test *LPPR1* as a driver of response to damage and a therapeutic target for enhancing neuroregeneration and slowing disease progression.

From the Department of Neurology (Z.D.W., E.M.H.-B., H.P.), University of Alabama at Birmingham, Birmingham, AL; Department of Epidemiology and Biostatistics (H.C.), Michigan State University, East Lansing, MI; Department of Neurology (S.A.F.), Jean & Paul Amos Parkinson's Disease and Movement Disorder Program, Emory University School of Medicine, Atlanta, GA; VA Puget Sound Health Care System and Department of Neurology (C.P.Z.), University of Washington, Seattle, WA; and Center for Genomic Medicine (H.P.), HudsonAlpha Institute for Biotechnology, Huntsville, AL.

Funding information and disclosures are provided at the end of the article. Full disclosure form information provided by the authors is available with the full text of this article at Neurology.org/NG.

The Article Processing Charge was funded by the authors.

This is an open access article distributed under the terms of the Creative Commons Attribution-NonCommercial-NoDerivatives License 4.0 (CC BY-NC-ND), which permits downloading and sharing the work provided it is properly cited. The work cannot be changed in any way or used commercially without permission from the journal.

Glossary

AIM = ancestry informative marker; **FDR** = false discovery rate; **HR** = hazard ratio; **LD** = linkage disequilibrium; **MAF** = minor allele frequency; **MAP** = moving average plot; **NGRC** = NeuroGenetics Research Consortium; **PAGE** = Parkinson's, Genes and Environment; **PC** = principal component; **PD** = Parkinson disease.

The underlying neurodegenerative process that causes Parkinson disease (PD) begins decades before the disease is diagnosed.¹ The current view is that following an initial insult (e.g., toxicity, trauma, or genetic), the disease starts with an asymptomatic phase of unknown duration, followed by development of prodromal nonmotor symptoms such as constipation, anosmia, and sleep disorders. Years later, cardinal motor signs appear, at which point a diagnosis of PD is made. Age at onset of motor signs, and therefore the age at diagnosis of PD, is highly variable, ranging from teen ages to the 10th decade of life. The reason for this variation is unknown, and understanding it will likely shed light on factors that affect the rate of disease progression.

There is substantial evidence that genetic factors play a major role in age at onset of motor signs and age at diagnosis of PD.^{2–6} Genome-wide studies have identified numerous loci that associate with the risk of developing PD,⁷ but the risk factors do not explain the variation in age at onset.^{8–10} Three loci have been nominated as modifiers of age at onset in familial PD.^{11,12} The present study was aimed at identifying genetic modifiers for common idiopathic PD. We hypothesized that identification of the genetic basis to interindividual variability in age at diagnosis will provide insights into the intrinsic mechanisms that determine the rate of deterioration during preclinical disease.

Methods

This study was a case-control GWAS, followed by replication and functional annotation.

Standard protocol approvals, registrations, and patient consents

The study was approved by the institutional review boards at all participating institutions. Written informed consent was obtained from all patients and controls for participation in the study.

Participants

The study included 2 data sets. The NeuroGenetics Research Consortium (NGRC) data set¹³ was used for the discovery GWAS, gene-based test, and functional annotations. The Parkinson's, Genes and Environment (PAGE) study¹⁴ was used for replication. Participants' characteristics are shown in table 1 and figure e-1 (links.lww.com/NXG/A66).

NGRC is a case-control study of genetically unrelated participants, including 2000 PD cases and 1986 controls.¹³ Patients were enrolled sequentially from movement disorder

clinics in Portland (OR), Seattle (WA), Albany (NY), and Atlanta (GA). Controls were spouses of patients or community volunteers, self-reported as being free of neurologic disease. The eligibility criterion for cases was diagnosis of PD by a movement disorder specialist according to the UK Brain Bank criteria.¹⁵ The eligibility criteria for controls were no neurologic disease and genetically unrelated to patients. Age was defined as age at study entry. Age at diagnosis was extracted from medical records or ascertained by self-report. Age at onset of the first motor sign was obtained using a self-administered questionnaire. Age at onset and age at diagnosis were highly correlated in the NGRC ($r^2 = 0.91$, $p < 2E-16$). All participants were whites of European descent.¹³

PAGE is a cross-sectional study nested in the longitudinal NIH-American Association of Retired Persons Diet and Health Study.¹⁴ Participants were enrolled in 1995–1997 (irrespective of PD) via a food frequency questionnaire mailing¹⁶ and in the 2004–2006 follow-up visit were asked if they had been diagnosed with a major chronic disease including PD. Participants who had been diagnosed with PD before enrollment (before 1998) were designated as prevalent PD (PAGE_p, N = 209), participants who were diagnosed during follow-up (1998–2006) were designated as incident PD (PAGE_i, N = 517), and participants who did not have PD were designated as controls (N = 1,549). All participants in this study were non-Hispanic whites.

Genotyping

NGRC participants were genotyped on Illumina Human-Omni1-Quad v1-0 B array and ImmunoChip array. Genotypes and samples were filtered by call rate, minor allele frequency (MAF) < 0.01, Hardy-Weinberg, and cryptic relatedness, as described before.¹³ Imputation was performed using IMPUTE v2.3.0,¹⁷ with the 1000G Phase3 integrated variant set (October 2014) as reference. Imputed single nucleotide polymorphisms (SNPs) with info score < 0.9 or MAF < 0.01 were excluded. A total of 8.5 million SNPs (900,000 genotyped and 7.6 million imputed) were used in the analysis.

PAGE participants were genotyped for rs73656147 (block 1) and rs17763929 (block 2). SNPs were chosen based on statistical significance and availability of predesigned validated TaqMan assay from Thermo Fisher (rs73656147 assay number = C__97534229_10; rs17763929 assay number = C__34297681_10).

Population structure

Principal component (PC) analysis¹⁸ is used to infer population-specific genetic differences, which arise from ancestry differences

Table 1 Data sets and participants' characteristics

	Discovery (NGRC)		Replication (PAGE)		
	PD	Controls	PAGE _p	PAGE _i	Controls
N	2,000	1,986	209	517	1,549
Male/Female	1,346/654	769/1,217	164/45	396/121	1,213/336
Age at enrollment mean ± SD	67.3 ± 10.7	70.3 ± 14.1	62.6 ± 4.9	63.2 ± 4.9	63.4 ± 4.9
Age at follow-up mean ± SD	NR	NR	73.9 ± 4.9	74.5 ± 4.9	74.0 ± 4.9
N with age at onset data	1,999	NR	0	0	NR
Age at onset mean ± SD	58.3 ± 11.9	NR	NA	NA	NR
N with age at diagnosis data	1,950	NR	209	517	NR
Age at diagnosis range	25–90	NR	42–72	53–81	NR
Age at diagnosis mean ± SD	60.4 ± 11.4	NR	59.9 ± 6.6	69.4 ± 5.4	NR

Abbreviations: NA = not available; NGRC = NeuroGenetics Research Consortium; NR = not relevant; PAGE = Parkinson's, Genes and Environment. Participants were non-Hispanic whites and genetically unrelated. Data on the NGRC participants were collected at enrollment: patients already had the diagnosis of PD and controls were free of neurologic disease. NGRC participants were enrolled at 4 sites: Oregon, Washington, New York, and Georgia. Age at onset mean ± SD were as follows: Oregon = 56.6 ± 12.8, Washington = 58.7 ± 11.8, New York = 59.4 ± 11.5, and Georgia = 58.7 ± 11.1. Age at diagnosis mean ± SD were as follows: Oregon = 59.6 ± 11.7, Washington = 60.7 ± 11.6, New York = 60.9 ± 11.1, and Georgia = 60.3 ± 10.6. PAGE participants were originally enrolled in the longitudinal NIH-AARP diet study in 1995–1997. Their PD status was investigated in 2004–2006. Participants who had the diagnosis of PD before 1998 were classified as prevalent PD (PAGE_p), participants who were diagnosed with PD during follow-up (between 1998 and 2006) were classified as incident PD (PAGE_i), and participants who did not have PD were designated as controls. Because PAGE participants were of similar age at entry, the method of classifying the participants into prevalent vs incident cases inevitably assigned earlier ages at diagnosis to the prevalent group and later diagnoses to the incident group.

in allele frequencies and can obscure genetic association studies if not accounted for. NGRC PC analysis was conducted using a pruned subset of 100K SNPs from the GWAS as previously described.¹³ The top 3 PCs (effect sizes PC1 = 0.2%, PC2 = 0.06%, and PC3 = 0.06%) were included in the GWAS and adjusted for in all downstream analyses involving the NGRC. The PAGE data sets used for replication did not have ancestry informative markers (AIMs); however, a subset of the participants (396 of 726 PD cases) was previously genotyped with the Immuchip array. We conducted PC analysis using a pruned set of 20K SNPs from the Immuchip array, using PLINK. Tests were conducted once using the full PAGE data set, with no PC adjustment, and again with a PAGE subset, adjusting for PC1-3 (effect sizes PC1 = 0.48%, PC2 = 0.20%, and PC3 = 0.17%). NGRC and PAGE cluster with Europeans in the 1000G_Phase_3 global data set (figure e-2, links.lww.com/NXG/A67).

Statistics

Discovery

GWAS was conducted using PD cases only (1,950 NGRC participants with known age at diagnosis). Association between 8.5M SNPs and age at diagnosis was tested using Cox regression in ProbABEL v0.5.0,¹⁹ specifying an additive genetic model, treating age at diagnosis as a quantitative trait, and adjusting for PC1-3. The statistical outcome of Cox regression was hazard ratios (HRs) and corresponding *p* values. Statistical significance was set at *p* < 5E-8. Manhattan plots and quantile-quantile (QQ) plots were generated using FUMA v1.3.0.²⁰ Genomic inflation factor (λ) was calculated using the *estlambda* function in GenABEL v1.8 in R.²¹ LocusZoom²² was

used to visualize the chr9:103,865,000–104,055,000 region (GWAS peak). Haploview v4.2²³ was used to generate linkage disequilibrium (LD) plots of *D'* and *r*² for SNPs in the chr9:103,865,000–104,055,000 region with GWAS *p* < 1E-4. LD between 2 SNPs was calculated using 1000G Phase3 v5 in LDlink.²⁴ Linear regression was used to estimate and test differences in mean age at diagnosis (β). Conditional analysis was performed using *coxph* function in the survival v2.41 R package. Moving average plots (MAPs) were generated using the *freqMAP* v0.2 R package.²⁵

Gene-based analysis was conducted using summary statistics from the GWAS and LD from the 1000G Phase3 EUR to map the GWAS SNPs to 18,985 protein-coding genes (hg19 build) and to calculate gene-based *p* values, using MAGMA v1.06,²⁶ as implemented in FUMA v1.3.0.²⁰ Statistical significance was set at Bonferroni-corrected *p* < 2.6E-6 (0.05/18,985).

Replication

Cox regression (*coxph* function in the survival v2.41 R package) was used to replicate the association of 2 SNPs with age at diagnosis. We used the same model as the NGRC (additive genetic model, treating age at diagnosis as a quantitative trait). Because of the availability of PCs only in a subset of PAGE, analyses were conducted twice: using the full PAGE data set without PC adjustment and using the subset that had AIMs and adjusting for PC1-3. PAGE_i and PAGE_p were treated separately and were combined using meta-analysis after testing for heterogeneity. If *p* of heterogeneity was < 0.1, the fixed-effect model was used. Meta-analysis was performed using the *metagen* function in the meta v4.8 R package.

Functional annotation

Functional annotation was conducted in FUMA v1.3.0,²⁰ using SNPs with GWAS $p < 1E-6$ and all variants in $r^2 \geq 0.6$ with them, and included CADD analysis,²⁷ eQTL mapping,²⁸ 3D chromatin interaction mapping (Hi-C),²⁹ annotation of enhancers,³⁰ tissue-specific expression of genes identified via Hi-C and eQTL mapping,²⁸ and their age-specific expression in the brain (BrainSpan.org). The false discovery rate (FDR) was used to correct for multiple testing. STRUM was used to predict the effect of a missense on the structural stability of a protein.³¹

Data availability

NGRC genotype and phenotype data are available at dbGaP ncbi.nlm.nih.gov/gap accession number phs000196.v3.p1.

Results

GWAS

In SNP-based GWAS, the most significant signal for association, at $p = 5E-8$, mapped to *LPPR1* on chromosome 9q31.1 (figure 1, A and B). In the gene-based test, *LPPR1* achieved $p = 1E-8$, surpassing the genome-wide statistical significance threshold of $p < 2.6E-6$ (figure 1, C and D). The p values were not inflated ($\lambda = 1.007$ SNP based, $\lambda = 1.04$ gene based). Analysis of LD in the region revealed 2 haplotype blocks with seemingly independent signals for association (figure 1, E and F). There was strong LD among SNPs in each block, but weak LD between the blocks ($r^2 \leq 0.2$) because of a recombination hot spot between them (figure 1F). The 2 blocks were in a ~ 200 Kb region inside *LPPR1*. Block 1 consisted of 51 SNPs with $MAF \sim 0.01$, which yielded $HR = 2.02-1.88$, with $p = 9E-7$ to $2E-5$ for association with age at diagnosis. Block 2 consisted of 39 SNPs with $MAF \sim 0.02$, which yielded $HR = 1.88-1.85$, with $p = 5E-8$ to $7E-7$. We chose 1 SNP to represent each block for replication: rs73656147 for block 1 ($MAF = 0.01$, $HR = 1.95$, $p = 3E-6$) and rs17763929 for block 2 ($MAF = 0.02$, $HR = 1.88$, $p = 5E-8$), both in Hardy-Weinberg ($p > 0.3$), with little correlation between them ($r^2 = 0.2$). Conditional analysis conducted to determine whether the 2 blocks were tagging the same or different disease-associated variants was inconclusive because although the signals were weakened when adjusted for each other, neither was abolished when conditioned on the other (table e-1, links.lww.com/NXG/A69).

There are 2 caveats in interpreting statistical evidence for association with age at diagnosis. First, age at diagnosis is correlated with age ($r^2 = 0.74$, $p < 2E-16$), which can result in spurious conclusions if the driving force responsible for the association is not identified. Second, tests of age at diagnosis are conducted using patients only without the benefit of controls. For example, an SNP that appears to be associated with earlier PD diagnosis may in fact be associated with an age-related event unrelated to PD. To interpret the statistical evidence for association with age at diagnosis, we examined

whether and how allele frequencies vary by age in cases or in controls. Allele frequencies were plotted in a moving average window as a function of age (figure e-3, links.lww.com/NXG/A68). Starting at age 45 years, allele frequencies were the same in cases and controls. In controls, allele frequencies remained the same across the age spectrum, whereas in cases, they decreased sharply and significantly by age and by age at diagnosis. The effect was therefore in cases and not in controls. Next, conditional analysis was conducted to tease age from age at diagnosis (table 2). The minor alleles of rs73656147 and rs17763929 were associated with age, as was expected, given their association with age at diagnosis. However, the association with age at diagnosis persisted when adjusted for age, but the association with age was abolished when adjusted for age at diagnosis. Hence, age at diagnosis was the driving force, and association with age was a by-product of the correlation.

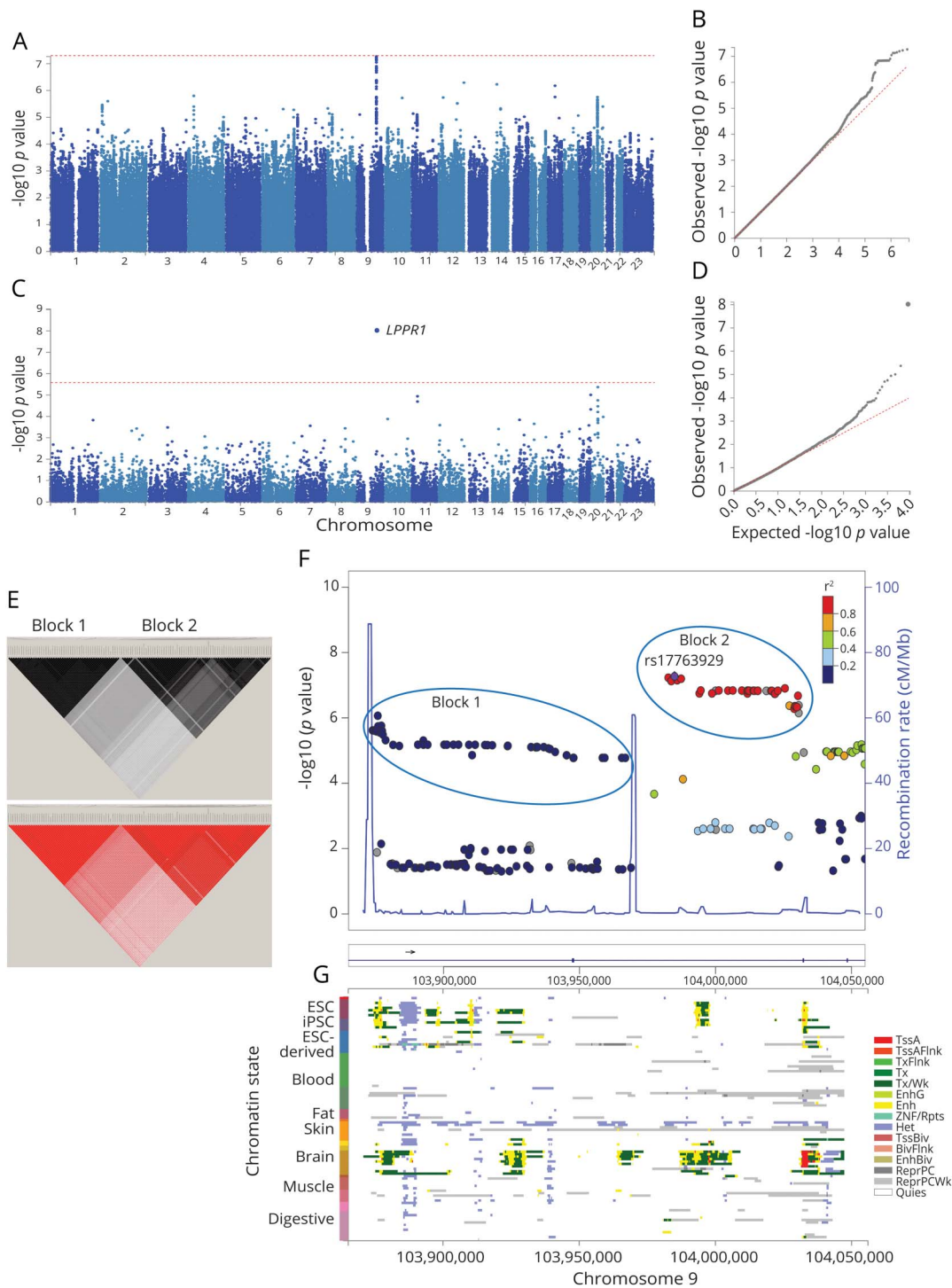
To gauge robustness of the association signals with age at diagnosis and to test for heterogeneity, we stratified the data by 8 PD-relevant variables, tested the association of each SNP with age at diagnosis within each stratum, and compared the results across strata for evidence of heterogeneity (table e-2, links.lww.com/NXG/A70). The 8 categories of stratification were family history, sex, cigarette smoking, caffeine intake, nonsteroidal anti-inflammatory drugs use, recruitment site, Jewish heritage, and the European country of ancestral origin. The association signal for rs73656147 (block 1) was robust across all strata. rs17763929 (block 2) showed evidence of heterogeneity as a function of recruitment site and the European country of ancestral origin. Given these results, we tested the association of the 2 SNPs with PCs. rs17763929 was associated with PC1 ($p = 7E-6$) and PC3 ($p = 8E-3$), and rs73656147 was not ($p > 0.05$ for PC1-3), indicating the presence of population structure in block 2 but not in block 1.

Replication

In comparison to NGRC, which had a 65-year range for age at diagnosis, the PAGE data sets had a narrower range of less than 30 years. Because PAGE participants were of similar age at study entry, the method of classifying the participants into prevalent PD (diagnosis before entry) vs incident PD (diagnosis after entry) inevitably assigned earlier ages at diagnosis to the prevalent group (PAGE_p) and later diagnoses to the incident group (PAGE_i). Mean age at diagnosis in PAGE_p was 59.9 ± 6.6 years, which was similar to the NGRC (60.4 ± 11.4). PAGE_i participants were on average 10 years older at diagnosis (69.4 ± 5.4 , range 53–81 years). Given the disparity in the range and mean ages at diagnosis, we analyzed PAGE_p and PAGE_i separately.

Association of rs73656147 (block 1) with age at diagnosis replicated robustly (table 3). There was no evidence of heterogeneity between PAGE_i and PAGE_p in the association of rs73656147 with age at diagnosis, although the signal was stronger in PAGE_p than in PAGE_i, which is not surprising, given that the former is enriched in cases with earlier age at

Figure 1 Results of genome-wide association study for age at diagnosis of PD



Genome-wide association was tested between 8.5 million SNPs and age at diagnosis in 1,950 PD cases from the NGRC, using the Cox hazard ratio regression method and adjusting for principal components (PC1-3). (A) Manhattan plot of SNP-based GWAS. Tallest peak, at $p = 5E-8$, was on chromosome 9q31.1. (B) QQ plot of SNP-based GWAS. The observed p values were not inflated ($\lambda = 1.007$). (C) Manhattan plot of gene-based GWAS. *LPPR1* was at $p = 1E-8$. Statistical significance threshold was $p < 2.6E-6$, which is Bonferroni corrected for the 18,985 protein-coding genes tested. (D) QQ plot of gene-based GWAS. The observed p values were not inflated ($\lambda = 1.04$). (E) r^2 (top panel) and D' (bottom panel). Linkage disequilibrium (LD) across the SNPs that gave $p < 1E-4$ for association with age at diagnosis reveals 2 blocks represented by rs73656147 (left triangle) and rs17763929 (right triangle). (F) Magnified map of the associated region (chr9:103,865,000–104,055,000), showing that PD-associated SNPs map to *LPPR1* and form 2 haplotype blocks separated by recombination hot spots (blue spikes). (G) Chromatin state of *LPPR1* (Roadmap 111 Epigenomes), showing that active enhancers (yellow), transcription start site (red), and transcripts (green) of *LPPR1* are seen only in stem cells and the brain and that the GWAS SNPs align with regulatory elements. ESC = embryonic stem cell; iPSC = induced pluripotent stem cell; TssA = active transcription start site (TSS); TssAFlnk = flanking active TSS; TxFlnk = transcription at gene 5' and 3'; Tx = strong transcription; TxWk = weak transcription; EnhG = genic enhancers; Enh = enhancers; ZNF/Rpts = zinc-finger genes and repeats; Het = heterochromatin; TssBiv = bivalent/poised TSS; BivFlnk = flanking bivalent TSS/enhancer; EnhBiv = bivalent enhancer; ReprPC = repressed polycomb; ReprPCWk = weak repressed polyComb; Quies = quiescent.

Table 2 Association of *LPPR1* variants with age and age at diagnosis is driven by age at diagnosis

	Block 1				Block 2		
	rs73656147				rs17763929		
	N	Cox HR	<i>p</i> Value	LR β [95% CI]	Cox HR	<i>p</i> Value	LR β [95% CI]
Ia. Association with age at diagnosis in cases	1,950	1.95	3E-6	-6.00 [-9.18 to -2.83]	1.88	5E-8	-5.65 [-8.20 to -3.11]
Ib. Association with age at diagnosis in cases adjusted for sex	1,950	1.95	3E-6	-5.98 [-9.16 to -2.81]	1.88	6E-8	-5.61 [-8.16 to -3.07]
II. Association with age in cases	2,000	1.48	5E-3	-4.19 [-7.1 to -1.3]	1.53	2E-4	-3.56 [-5.9 to -1.2]
III. Association with age in controls	1,986	0.83	0.08	2.34 [-0.6 to 5.2]	0.84	0.07	2.37 [-0.3 to 5.1]
IV. Association with age at diagnosis in cases adjusted for age	1,950	1.45	0.01	-2.30 [-3.9 to -0.7]	1.26	0.05	-2.11 [-3.4 to -0.8]
V. Association with age in cases adjusted for age at diagnosis	1,950	0.92	0.56	0.78 [-0.8 to 2.3]	0.99	0.96	0.68 [-0.6 to 1.9]

Abbreviations: CI = confidence interval; HR = hazard ratio; LR = linear regression; β = effect size on age at diagnosis (in years) per copy of minor allele. The associations were tested in the NGRC data set using Cox regression, and the effect sizes were estimated using linear regression (LR). HR is the age-for-age increase in the odds of event per copy of the minor allele, as estimated using Cox regression. β is the difference in years in age at diagnosis between carriers of 1 minor allele vs no minor allele, as estimated using linear regression. Age at diagnosis was the primary outcome of the study. Minor alleles of rs73656147 and rs17763929 were associated with higher HR and younger age at diagnosis (Ia). The association was not influenced by sex (Ib), which was expected because, unlike PD risk, which is significantly associated with sex (OR = 3.26, $p < 2E-16$), age at diagnosis is not associated with sex (HR = 0.99, $p = 0.83$). Minor alleles were also associated with younger ages in cases (II), but not in controls (III). Because age and age at diagnosis were correlated ($r^2 = 0.74$, $p < 2E-16$), an association with one will show as an association with both. In conditional analysis, the association with age at diagnosis persisted when adjusted for age (IV), but the association with age was abolished when adjusted for age at diagnosis (V), suggesting that age at diagnosis was the driving force and association with age was a by-product of the correlation.

diagnosis. Nor was there evidence of heterogeneity between PAGE and NGRC for the association of rs73656147 with age at diagnosis. Meta-analysis yielded HR = 2.14, $p = 1E-3$ for replication and HR = 2.00, $p = 9E-9$ for replication and discovery. Mean difference in age at diagnosis per copy of rs73656147 minor allele was -6.0 (95% confidence interval: -9.18 to -2.83) years in the NGRC, -5.53 (-9.72 to -1.34) in PAGE_p, -0.84 (-4.22 to 2.55) in PAGE_i, and -4.08 (-7.45 to -0.70) in the meta-analysis of the 3 data sets.

Association of rs17763929 (block 2) with age at diagnosis showed significant heterogeneity between PAGE_i and PAGE_p (table 3), as it had within the NGRC (table e-2, links.lww.com/NXG/A70). The association with rs17763929 replicated in PAGE_p but not in PAGE_i. There was significant heterogeneity between PAGE_i and NGRC, but not between PAGE_p and NGRC. Meta-analysis of PAGE_p and NGRC yielded HR = 1.88, $p = 4E-9$ for full PAGE data and HR = 1.95, $p = 3E-9$ for the PAGE subsample adjusted for PC1-3. Including PAGE_i with PAGE_p and NGRC in a random-effects meta-analysis diluted the effect size to HR = 1.53, $p = 0.04$. Mean difference in age at diagnosis per copy of rs17763929 minor allele was -5.65 (-8.20 to -3.11) years in the NGRC, -3.62 (-7.23 to -0.02) in PAGE_p, and 0.62 (-1.34 to 2.58) in PAGE_i.

Functional annotation

Hi-C analysis showed significant (FDR < 1E-6) chromatin interaction between the PD-associated *LPPR1* SNPs and promoters of *LPPR1* and several genes on chromosome 9 (figure 2, A). Some of the SNPs that were significant in Hi-C

mapped to enhancers in the brain (table 4 and figure 1, G). Eleven of the genes identified through Hi-C are expressed in the brain: *LPPR1*, *SEC61B*, *MSANTD3-TMEFF1*, *TMEFF1*, *GALNT12*, *MURC*, *GRIN3A*, *NR4A3*, *ALG2*, *MRPL50*, and *ZNF189* (figure 2, B and C). The expression of *LPPR1* in the brain is the strongest in early prenatal stage and decreases with developmental stage and increasing age (figure 2, C).

CADD analysis, a scoring system for deleteriousness of genetic variants, identified 5 SNPs in block 1 and 3 in block 2, with CADD = 10–19 (table 4), which places them among the top 10% (CADD > 10) to 1% (CADD > 20) of most deleterious mutations in the genome.²⁷ rs41296085 (CADD = 18, in block 1) is a missense (p.Ser12Ala) in exon 2, predicted to structurally destabilize the *LPPR1* protein ($\Delta\Delta G = -1.2$). The remainder of the variants with high CADD scores are in introns. eQTL analysis revealed an association between rs117451395 (block 1) with expression levels of *GRIN3A* (FDR = 4E-4).

Discussion

There has been intense research on PD risk factors, which so far has resulted in identification of numerous causative genes, 40 susceptibility loci, several environmental factors, and a few genes that interact with the environmental factors to increase or reduce the risk of developing PD. In contrast, we know little about factors that affect the rate of disease progression. In this study, we attempted to identify genetic modifiers of age at diagnosis, a reflection of rate of progression, using an

Table 3 Replication

Data sets	N PD cases	Age at diagnosis	Block 1 rs73656147		Block 2 rs17763929	
		Mean ± SD	HR	p Value	HR	p Value
NGRC (discovery)	1,950	60.4 ± 11.4	1.95	3E-6	1.88	5E-8
PAGE _p (replication)	209	59.9 ± 6.6	2.88	7E-4	1.87	0.01
PAGE _p with PC1-3	113	59.9 ± 6.8	2.17	0.05	3.03	4E-3
PAGE _i (replication)	517	69.4 ± 5.4	1.62	0.07	1.04	0.41
PAGE _i with PC1-3	283	69.2 ± 5.3	1.48	0.16	1.03	0.45
Meta-analysis A	Heterogeneity rs73656147		Heterogeneity rs17763929			
PAGE _p and PAGE _i	ns	0.08	2.14	1E-3	1.34	0.31
NGRC and PAGE _p	ns	ns	2.08	2E-8	1.88	4E-9
NGRC and PAGE _i	ns	0.01	1.90	9E-7	1.42	0.23
NGRC and PAGE _p and PAGE _i	ns	0.02	2.00	9E-9	1.53	0.04
Meta-analysis B						
PAGE _p and PAGE _i	ns	0.02	1.73	0.07	1.67	0.34
NGRC and PAGE _p	ns	ns	1.97	6E-7	1.95	3E-9
NGRC and PAGE _i	ns	0.02	1.89	2E-6	1.43	0.23
NGRC and PAGE _p & PAGE _i	ns	0.02	1.91	5E-7	1.68	0.05

Abbreviations: HR = hazard ratio; NGRC = NeuroGenetics Research Consortium; ns = not statistically significant; PAGE = Parkinson's, Genes and Environment; PC = principal component; PD = Parkinson disease.

Two SNPs with signals for association with age at diagnosis of PD in the NGRC data set (discovery) were genotyped and tested for association with age at diagnosis of PD in the PAGE data set (replication). PAGE participants were designated as PAGE_p if they were diagnosed before study entry or PAGE_i if they were diagnosed during the study. Cox regression was used to test the association of SNP (additive model) with age at diagnosis (quantitative trait) and to calculate hazard ratios (HRs) and the corresponding significance (*p*). NGRC was adjusted for PC1-3 in GWAS and meta-analyses. Only a subset of PAGE had ancestry informative markers (AIMs) for which PC could be calculated; thus, results are shown for the full PAGE data set without PC adjustment and for the PAGE subsample with PC adjustment. *p* values are 2-sided for NGRC and one-sided for PAGE because of the directionality of the hypothesis being replicated.

Meta-analysis A: NGRC (PC1-3 adjusted) and PAGE (all data without PC adjustment). Meta-analysis B: NGRC (PC1-3 adjusted) and PAGE (subset of data adjusted for PC1-3). rs73656147 replicated robustly with no evidence of heterogeneity across data sets. rs17763929 replicated in PAGE_p and showed significant heterogeneity between PAGE_i and PAGE_p or NGRC.

Meta-analysis was conducted using the fixed-effects model if there was no evidence for heterogeneity ($p \geq 0.1$) and the random effects model if there was heterogeneity ($p < 0.1$).

unbiased genome-wide approach, followed by independent replication, and functional annotation.

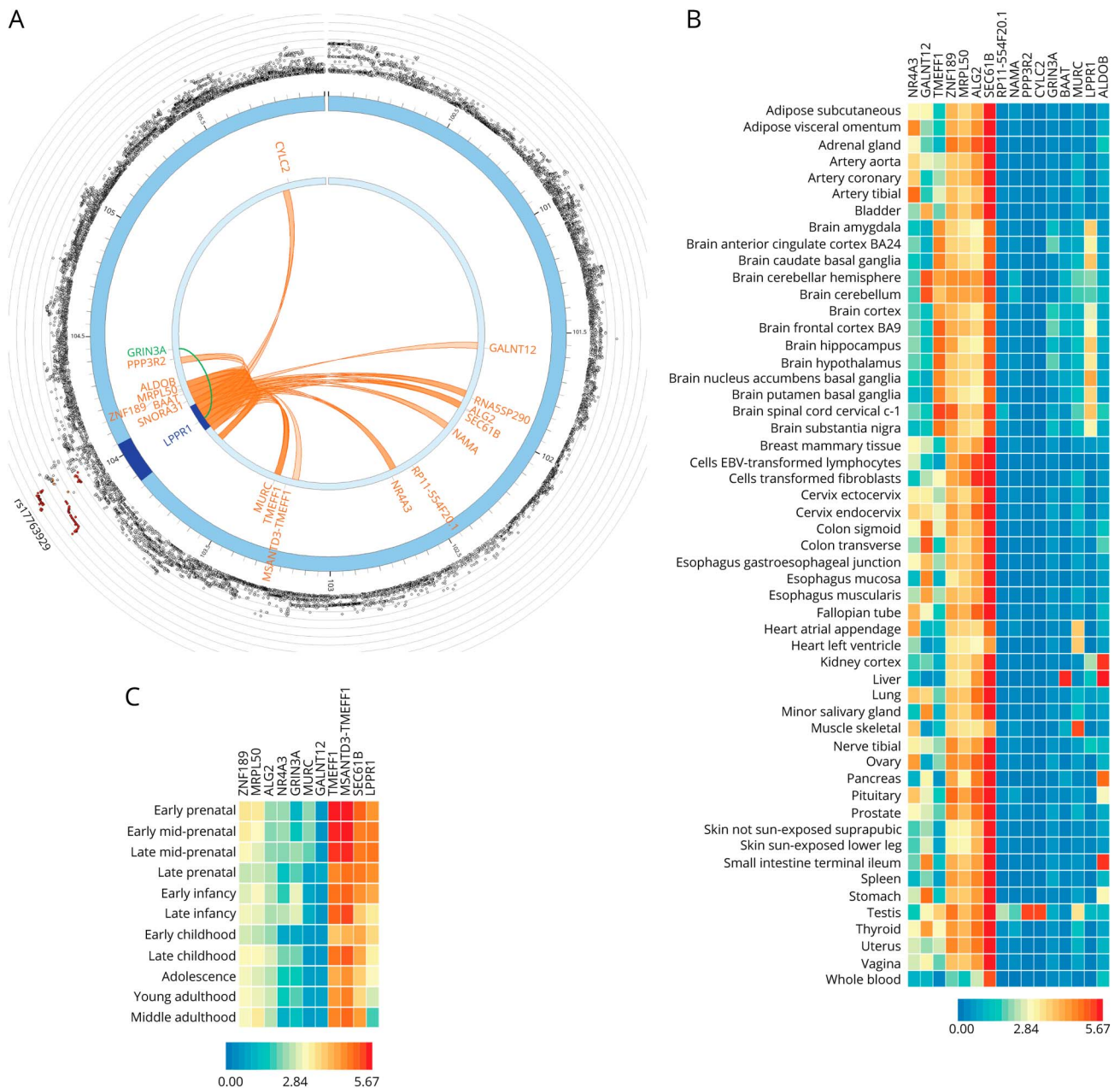
We uncovered evidence for association of genetic variants in neuronal plasticity-related gene 3 (*LPPRI*) with age at diagnosis of PD. Two signals of association were detected, each representing a haplotype block of SNPs. The variants that were associated with earlier age at diagnosis had low allele frequencies ($MAF = 0.01$ – 0.02), as were the variants that were previously found for age at onset of familial PD.¹¹ The low allele frequencies may be one reason why modifier genes have been more difficult to detect than common variants that associate with risk.

The association with block 1 replicated robustly in both PAGE_p and PAGE_i. Block 2 signal replicated in PAGE_p but not in PAGE_i. Block 2 has a complex LD structure, with evidence of population substructure, which limits generalizability of results. Failure to capture a signal for block 2 in PAGE_i may be because we had genotype on only 1 SNP in block 2 for PAGE, which did

not fully capture the complexity of block 2. PAGE_i participants being significantly older than NGRC and PAGE_p participants may also be a factor. *LPPRI* promotes neuroregeneration,^{32–34} but its expression diminishes with age to nearly undetectable level by age 40 years (figure 2C). One can speculate that some detrimental variants may not have an effect after a certain age when the gene is no longer expressed.

Functional annotation of the PD-associated variants in *LPPRI* revealed the presence of several variants with predicted deleterious effects, including a missense that destabilizes the structure of *LPPRI*, a regulatory element that associates with expression levels of *GRIN3A*, and enhancers that interact with promoters of *LPPRI* and several other genes in the brain. Some of the candidate genes that were identified via interaction with *LPPRI* play key roles in pathways that are implicated in PD, including *GRIN3A* (which encodes a subunit of NMDA receptor involved in the glutamate-regulated ion channels in the brain), *SEC61B* (protein transport apparatus of the endoplasmic reticulum membrane), *MURC* (Rho

Figure 2 Functionally significant genes



(A) 3D chromatin interaction (Hi-C) and eQTL analysis. Hi-C revealed significant interaction between GWAS variants in *LPPR1* and 17 other genes on chromosome 9 ($FDR < 1E-6$, shown in orange). An SNP in *LPPR1* was associated with the expression of *GRIN3A* ($FDR = 4E-4$, shown in green). (B) Tissue-specific expression of *LPPR1*, *GRIN3A*, and genes in Hi-C with *LPPR1*. Colors reflect average expression (\log_2 transformed) from highest (red) to lowest/absent (blue). (C) Age-specific expression of the genes in the brain. *LPPR1* expression decreases with age.

kinase signaling), and *MRPL50* (mitochondrial ribosomal protein).

LPPR1 is one of the 5 members of a brain-specific gene family that modulates neuronal plasticity during development, aging, and after brain injury.^{32–34} *LPPR1* is the strongest driver of axonal outgrowth in the gene family. Studies in mice have shown that after neuronal injury, overexpression of *LPPR1* enhances axonal growth, improves motor behavior, and promotes functional recovery.^{33,34} Extrapolating to our findings,

we propose that *LPPR1* is involved, not necessarily in the cause of PD, rather in response to damage, and influences the efficacy of regeneration and the subsequent rate of deterioration in preclinical PD. The actual cause of injury and neuronal death is not stipulated in this hypothesis; it could be head trauma, environmental toxins or genetic, but once the initial damage is incurred, it is the efficacy of intrinsic mechanisms of repair that determine the rate of disease progression. Present findings provide a strong foundation for mechanistic studies to investigate the role of *LPPR1* in PD and

Table 4 Functionally significant variants

Block	GWAS SNP	position:alleles	GWAS <i>p</i>	<i>r</i> ²	eQTL	CADD	Hi-C/EnhBrain
1	rs77351585	9:103874925:C:T	2E-06	1	—	18	Hi-C/EnhBrain
1	rs73495940	9:103875807:G:C	9E-07	Lead	—	—	Hi-C
1	rs150164200	9:103875896:A:C	2E-06	1	—	10.4	—
1	rs117583993 ^a	9:103876647:G:A	3E-06	1	—	—	Hi-C/EnhBrain
1	rs148874623	9:103939117:A:C	9E-06	1	—	12.1	—
1	rs117451395	9:103941039:C:T	1E-05	1	<i>GRIN3A</i>	—	Hi-C
1	rs41296085	9:103947810:T:G	2E-05	1	—	18 (missense) ^b	Hi-C
1	rs117900237	9:103959240:G:A	2E-05	1	—	10.5	Hi-C
2	rs17763929	9:103984900:A:G	5E-08	Lead	—	—	Hi-C
2	rs61188842	9:103988006:C:T	8E-05	0.6	—	—	Hi-C/EnhBrain
2	rs117058418	9:104011717:T:C	2E-07	1	—	10.4	Hi-C
2	rs117314512	9:104014244:G:A	2E-07	1	—	12.4	Hi-C
2	rs149155028	9:104032402:TTC:T	1E-05	0.7	—	18.6	Hi-C

Functional annotation was conducted on SNPs with GWAS *p* < 1E-6 and SNPs that were in high LD with them (*r*² > 0.6). Variants are shown if they are the lead SNPs (most significant) for the block, or an eQTL (FDR = 4E-4), or had a CADD score >10, or had both significant evidence for 3D chromatin interaction (Hi-C, FDR < 1E-6) and overlapped with an enhancer in the brain. Block 1 is a single block of SNPs in high LD. Block 2 has a complex LD structure with at least 3 subhaplotypes (figure e1-C, links.lww.com/NXG/A66). Variants are shown with their rs accession number, chromosome position and the 2 alleles (major: minor), GWAS *p* value for association with age at diagnosis of PD, and their correlation (*r*²) with the lead SNP of the block. eQTL: an SNP that is associated with gene expression, in this case, rs117451395, was associated with gene expression levels at *GRIN3A* (FDR = 4E-4). CADD: a predictive score for the deleteriousness of a variant. A CADD score of 10 usually means that the variant is among the top 10% of deleterious mutations in the genome. A CADD score of 20 puts the variant among the top 1% of deleterious mutations. Hi-C: SNPs with significant (FDR < 1E-6) evidence for interacting with the promoter region of *LPPR1* or of another gene (figure 2 for the genes). Hi-C/EnhBrain: the subset of Hi-C SNPs that map to the enhancer regions of *LPPR1* in the brain according to the Roadmap 111 epigenomes.

^a One SNP was shown to represent several variants in high LD (*r*² > 0.9) with similar MAF, GWAS *p* value, and Hi-C/EnhBrain evidence.

^b This mutation yielded $\Delta\Delta G = -1.2$, which predicts a destabilizing effect on the protein structure of *LPPR1*.

determine its potential as a therapeutic target to impede disease progression.

Author contributions

Z.D. Wallen: statistical analysis, review, and critique of the manuscript. H. Chen: creation of the PAGE data set, acquisition of data, review, and critique of the manuscript. E.M. Hill-Burns: assembly and QC of phenotype and genotype data, imputation, review, and critique of the manuscript. S.A. Factor and C.P. Zabetian: creation of the NGRC data set, review, and critique of the manuscript. H. Payami: study concept, design and execution, creation of the NGRC data set, wrote the manuscript, and obtained funding.

Study funding

This work was supported by the National Institute of Neurological Disorders and Stroke grant R01NS036960. Additional support was provided by a Merit Review Award from the Department of Veterans Affairs grant 1I01BX000531; Office of Research & Development, Clinical Sciences Research & Development Service, Department of Veteran Affairs; the Close to the Cure Foundation; and the Sartain Lanier Family Foundation. Genome-wide array genotyping was conducted by the Center for Inherited Disease Research, which is funded by the NIH grant HHSN268200782096C. Collection of samples and

data for replication (Parkinson, Genes, and Environment (PAGE) study) was supported by the intramural research program of NIH National Institute of Environmental Health Sciences grant Z01 ES101986. Funding agencies did not have a role in the design or execution of the study.

Disclosure

Z.D. Wallen, H. Chen, C.P. Zabetian, and E.M. Hill-Burns report no disclosures. S.A. Factor has received honoraria from Neurocrine, Lundbeck, Teva, Avanir, Sunovion Pharmaceuticals, Adamas, and UCB; has received research support from Ipsen, Medtronic, Teva, US WorldMeds, Sunovion Pharmaceuticals, Solstice, Vaccinex, Voyager, the CHDI Foundation, the Michael J. Fox Foundation, and the NIH; and receives publishing royalties from Demos, Blackwell Futura, and UpToDate. H. Payami has received research support from the NIH and the University of Alabama at Birmingham. Full disclosure form information provided by the authors is available with the full text of this article at Neurology.org/NG.

Received February 13, 2018. Accepted in final form June 11, 2018.

References

1. Obeso JA, Stamelou M, Goetz CG, et al. Past, present, and future of Parkinson's disease: a special essay on the 200th Anniversary of the Shaking Palsy. *Mov Disord* 2017;32:1264–1310.

2. Zarepari S, Taylor TD, Harris EL, Payami H. Segregation analysis of Parkinson disease. *Am J Med Genet* 1998;80:410–417.
3. Maher NE, Currie LJ, Lazzarini AM, et al. Segregation analysis of Parkinson disease revealing evidence for a major causative gene. *Am J Med Genet* 2002;109:191–197.
4. McDonnell SK, Schaid DJ, Elbaz A, et al. Complex segregation analysis of Parkinson's disease: the Mayo clinic family study. *Ann Neurol* 2006;59:788–795.
5. Hamza TH, Payami H. The heritability of risk and age at onset of Parkinson's disease after accounting for known genetic risk factors. *J Hum Genet* 2010;55:241–243.
6. Escott-Price V, Consortium IPsDG, Nalls MA, et al. Polygenic risk of Parkinson disease is correlated with disease age at onset. *Ann Neurol* 2015;77:582–591.
7. Chang D, Nalls MA, Hallgrimsdottir IB, et al. A meta-analysis of genome-wide association studies identifies 17 new Parkinson's disease risk loci. *Nat Genet* 2017;49:1511–1516.
8. Nalls MA, Escott-Price V, Williams NM, et al. Genetic risk and age in Parkinson's disease: continuum not stratum. *Mov Disord* 2015;30:850–854.
9. Lill CM, Hansen J, Olsen JH, Binder H, Ritz B, Bertram L. Impact of Parkinson's disease risk loci on age at onset. *Mov Disord* 2015;30:847–850.
10. Pihlstrom L, Toft M. Cumulative genetic risk and age at onset in Parkinson's disease. *Mov Disord* 2015;30:1712–1713.
11. Hill-Burns EM, Ross OA, Wissemann WT, et al. Identification of genetic modifiers of age-at-onset for familial Parkinson's disease. *Hum Mol Genet* 2016;25:3849–3862.
12. Trinh J, Gustavsson EK, Vilarino-Guell C, et al. DNM3 and genetic modifiers of age of onset in LRRK2 Gly2019Ser parkinsonism: a genome-wide linkage and association study. *Lancet Neurol* 2016;15:1248–1256.
13. Hamza TH, Zabetian CP, Tenesa A, et al. Common genetic variation in the HLA region is associated with late-onset sporadic Parkinson's disease. *Nat Genet* 2010;42:781–785.
14. Chen H, Huang X, Guo X, et al. Smoking duration, intensity, and risk of Parkinson disease. *Neurology* 2010;74:878–884.
15. Hughes AJ, Daniel SE, Kilford L, Lees AJ. Accuracy of clinical diagnosis of idiopathic Parkinson's disease: a clinico-pathological study of 100 cases. *J Neurol Neurosurg Psychiatry* 1992;55:181–184.
16. Schatzkin A, Subar AF, Thompson FE, et al. Design and serendipity in establishing a large cohort with wide dietary intake distributions: the National Institutes of Health-American Association of retired persons diet and Health study. *Am J Epidemiol* 2001;154:1119–1125.
17. Howie BN, Donnelly P, Marchini J. A flexible and accurate genotype imputation method for the next generation of genome-wide association studies. *PLoS Genet* 2009;5:e1000529.
18. Price AL, Patterson NJ, Plenge RM, Weinblatt ME, Shadick NA, Reich D. Principal components analysis corrects for stratification in genome-wide association studies. *Nat Genet* 2006;38:904–909.
19. Aulchenko YS, Struchalin MV, van Duijn CM. ProbABEL package for genome-wide association analysis of imputed data. *BMC Bioinformatics* 2010;11:134.
20. Watanabe K, Taskesen E, van Bochoven A, Posthuma D. Functional mapping and annotation of genetic associations with FUMA. *Nat Commun* 2017;8:1826.
21. Aulchenko YS, Ripke S, Isaacs A, van Duijn CM. GenABEL: an R library for genome-wide association analysis. *Bioinformatics* 2007;23:1294–1296.
22. Pruim RJ, Welch RP, Sanna S, et al. LocusZoom: regional visualization of genome-wide association scan results. *Bioinformatics* 2010;26:2336–2337.
23. Barrett JC, Fry B, Maller J, Daly MJ. Haploview: analysis and visualization of LD and haplotype maps. *Bioinformatics* 2005;21:263–265.
24. Machiela MJ, Chanock SJ. LDlink: a web-based application for exploring population-specific haplotype structure and linking correlated alleles of possible functional variants. *Bioinformatics* 2015;31:3555–3557.
25. Payami H, Kay DM, Zabetian CP, Schellenberg GD, Factor SA, McCulloch CC. Visualizing disease associations: graphic analysis of frequency distributions as a function of age using moving average plots (MAP) with application to Alzheimer's and Parkinson's disease. *Genet Epidemiol* 2010;34:92–99.
26. de Leeuw CA, Mooij JM, Heskes T, Posthuma D. MAGMA: generalized gene-set analysis of GWAS data. *PLoS Comput Biol* 2015;11:e1004219.
27. Kircher M, Witten DM, Jain P, O'Roak BJ, Cooper GM, Shendure J. A general framework for estimating the relative pathogenicity of human genetic variants. *Nat Genet* 2014;46:310–315.
28. Consortium G. Human genomics. The Genotype-Tissue Expression (GTEx) pilot analysis: multitissue gene regulation in humans. *Science* 2015;348:648–660.
29. van Berkum NL, Lieberman-Aiden E, Williams L, et al. Hi-C: a method to study the three-dimensional architecture of genomes. *J Vis Exp* 2010:e-1869.
30. Consortium RE, Kundaje A, Meuleman W, et al. Integrative analysis of 111 reference human epigenomes. *Nature* 2015;518:317–330.
31. Quan L, Lv Q, Zhang Y. STRUM: structure-based prediction of protein stability changes upon single-point mutation. *Bioinformatics* 2016;32:2936–2946.
32. Savaskan NE, Brauer AU, Nitsch R. Molecular cloning and expression regulation of PRG-3, a new member of the plasticity-related gene family. *Eur J Neurosci* 2004;19:212–220.
33. Brogгинi T, Schnell L, Ghoochani A, et al. Plasticity related gene 3 (PRG3) overcomes myelin-associated growth inhibition and promotes functional recovery after spinal cord injury. *Aging (Albany NY)* 2016;8:2463–2487.
34. Fink KL, Lopez-Giraldez F, Kim IJ, Strittmatter SM, Cafferty WBJ. Identification of intrinsic axon growth modulators for intact CNS neurons after injury. *Cell Rep* 2017;18:2687–2701.

Neurology[®] Genetics

Plasticity-related gene 3 (*LPPR1*) and age at diagnosis of Parkinson disease

Zachary D. Wallen, Honglei Chen, Erin M. Hill-Burns, et al.

Neurol Genet 2018;4;

DOI 10.1212/NXG.0000000000000271

This information is current as of October 5, 2018

Updated Information & Services	including high resolution figures, can be found at: http://ng.neurology.org/content/4/5/e271.full.html
References	This article cites 33 articles, 2 of which you can access for free at: http://ng.neurology.org/content/4/5/e271.full.html##ref-list-1
Citations	This article has been cited by 1 HighWire-hosted articles: http://ng.neurology.org/content/4/5/e271.full.html##otherarticles
Subspecialty Collections	This article, along with others on similar topics, appears in the following collection(s): Association studies in genetics http://ng.neurology.org/cgi/collection/association_studies_in_genetics Parkinson's disease/Parkinsonism http://ng.neurology.org/cgi/collection/parkinsons_disease_parkinsonism
Permissions & Licensing	Information about reproducing this article in parts (figures, tables) or in its entirety can be found online at: http://ng.neurology.org/misc/about.xhtml#permissions
Reprints	Information about ordering reprints can be found online: http://ng.neurology.org/misc/addir.xhtml#reprintsus

Neurol Genet is an official journal of the American Academy of Neurology. Published since April 2015, it is an open-access, online-only, continuous publication journal. Copyright © 2018 The Author(s). Published by Wolters Kluwer Health, Inc. on behalf of the American Academy of Neurology. All rights reserved. Online ISSN: 2376-7839.

